

TrucheckTM
Intelli

Multi-cancer screening

Helps find cancer early and saves lives.
A simple blood test

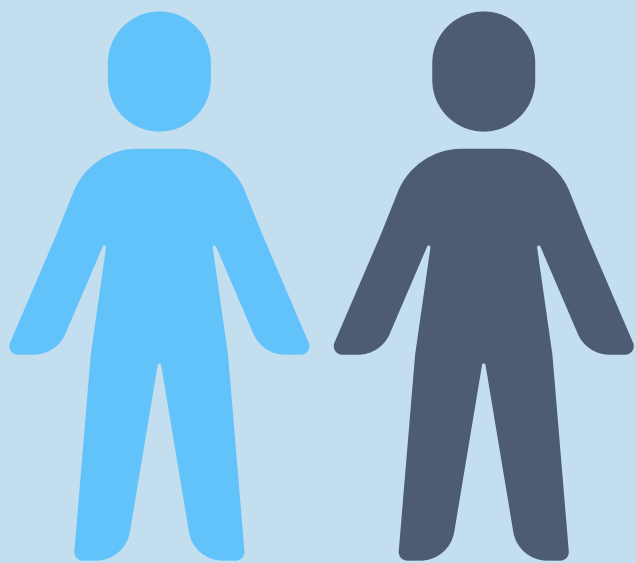


DATAR
CANCER GENETICS

WHY IS CANCER SCREENING IMPORTANT?

1 in 2

people in the UK, born after 1960, will be diagnosed with cancer in their lifetime. ¹



Currently, almost half of those people are diagnosed after the cancer has spread. ²



Finding cancer early, before you have symptoms, can significantly improve your chances of survival.

WHY TRUCHECK?

Trucheck Intelli - Helping to protect ourselves and loved ones against cancer.

Many cancers are without a current screening process for early detection. Some cancers cause no symptoms until they have spread throughout the body.

Trucheck intelli is a simple revolutionary blood test which can help you find cancer early, before you show symptoms.

It also looks for multiple cancers, many of which are not covered in routine screening.

The test can help avoid late cancer detection which can lead to intensive and expensive treatments.



Trucheck is designed to be used in addition to, and not replace, conventional screening.

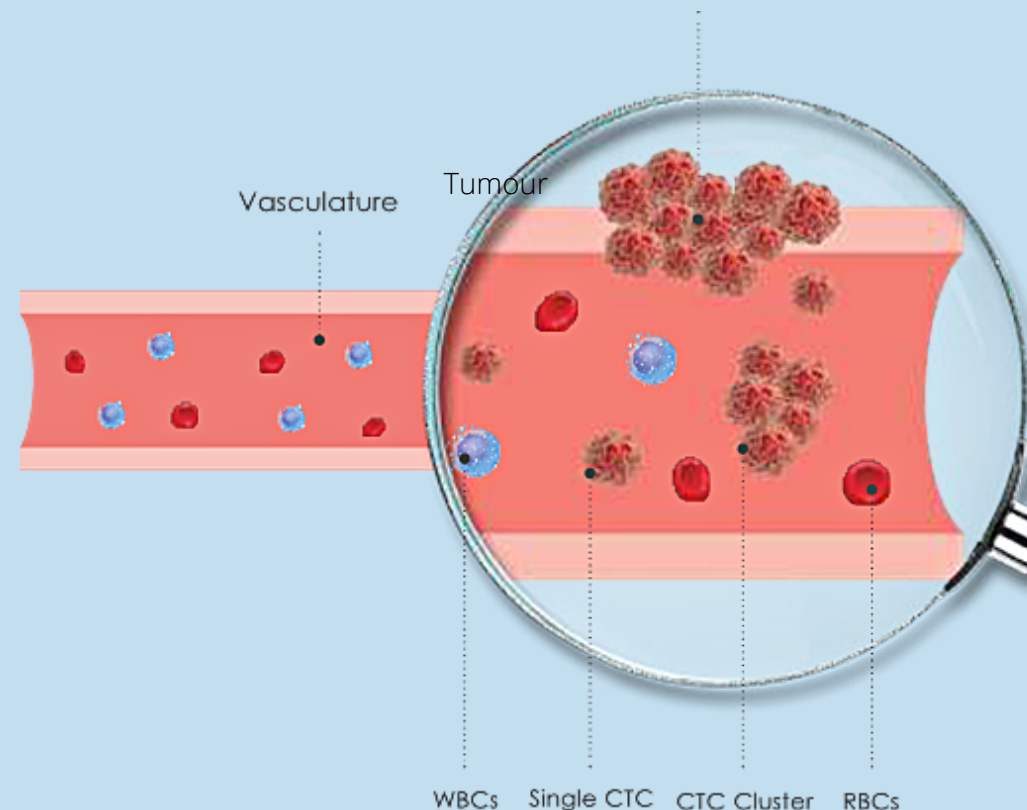
HOW DOES TRUCHECK FIND CANCER EARLY?

When cancer is present in someone, it sheds tiny cells and tumour fragments into the bloodstream, called circulating tumour cells (CTCs).

These cells are the main reason cancer eventually spreads in the body, especially if they move in clusters (a group).

Trucheck can detect them from your blood sample and indicate the likely organ of origin.

Healthcare professionals can then carry out targeted follow up investigations and treat patients if necessary.



KEY:

WBC – White Blood Cell

CTC – Circulating Tumour Cell

RBC – Red Blood Cell

HOW MANY CANCERS CAN TRUCHECK INTELLI FIND?



Trucheck Intelli can find over 70 types of solid organ cancers.

It detects common cancers such as Breast, Lung, Bowel, Prostate, and many other cancers which are not routinely screened for.

These cancers account for 81%³ of all cancer cases globally and include several types of aggressive cancer.



ADVANTAGES OF TRUCHECK



Check for 70 types of cancer with a single blood test



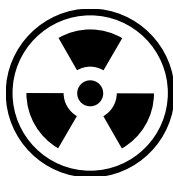
Peace of mind



Quick and painless



Can indicate the likely organ of origin



Avoid radiation exposure

HOW DO I GET A TRUCHECK TEST?

1. You should discuss with your Doctor if Trucheck Intelli is suitable for you. It could be particularly useful if you have a higher risk because of your age or family history.
2. If it is, you can arrange with them where and when to take your blood test.
3. Once the blood has been taken, it will be sent to the laboratory in Surrey for testing.
4. The results will be sent to your Doctor within two weeks.





THE TRUCHECK
TEST IS
SPECIFICALLY
DESIGNED FOR
YOU.

FREQUENTLY ASKED QUESTIONS



Do I have to go through a Doctor?

Yes. A Doctor must approve and prescribe a Trucheck Intelli test for you.

How long before my Doctor gets my results?

Your Doctor will get your results within two weeks.

What does it mean if I receive a positive result?

A positive result means the test has detected an indication of cancer. Your Doctor should discuss with you suitable next steps to confirm if cancer is present.

What does it mean if I receive a negative result?

A negative result means the test detected no evidence of cancer when you took the test.

Can I use Trucheck if I have symptoms of cancer?

No. The test is designed for people without symptoms. If you have symptoms, you should seek urgent medical advice.

FREQUENTLY ASKED QUESTIONS - CONTINUED



Can I use Trucheck to monitor recurrence if I have had cancer?

No. It is only suitable for people who have not had cancer.

How often do I need to take the tests?

You should discuss this with your Doctor. It can be part of your yearly check-up.

Does Trucheck replace conventional cancer screening?

No. It is designed to be used in addition to, and not replace, conventional screening.

If I have cancer, how often will Trucheck detect it?

Trucheck Intelli will detect the cancers it screens for 88% of the time.

Can Trucheck give a positive result when cancer is not present?

There is a possibility that in around 1% of cases the test may show positive, but cancer is not actually present.⁵

Important Safety Information

Trucheck has been designed for use in healthy adults over the age of 40. Trucheck does not detect all cancer types and should be used alongside other screening modalities as prescribed by a healthcare practitioner. Trucheck detects circulating tumour cells in the blood and is intended to provide an indication of cancer activity and location in the body.

Trucheck results should be interpreted by a healthcare practitioner. A “Negative” result does not rule out cancer. A "Positive" result requires follow up diagnostic investigations to confirm diagnosis. If cancer is not confirmed after further investigations, it may not be present, may not be detectable by diagnostic follow-up testing, or may originate from a different part of the body. False-positive and false-negative test results do occur. Rx only.

References

- ¹ Cancer Research UK, 1 in 2 people in the UK will get cancer [Internet]; 2015, Feb 4, [cited 2022, Sep 25] Available from <https://news.cancerresearchuk.org/2015/02/04/1-in-2-people-in-the-uk-will-get-cancer/>
- ² Cancer Research UK, Cancer statistics for the UK [Internet]; [cited 2022, Sep 25] Available from <https://www.cancerresearchuk.org/health-professional/cancer-statistics-for-the-uk#heading-Four>
- ³ Global Cancer Population Fact Sheet [Internet]. Globocan. 2022 [cited 28 September 2022]. Available from: <https://gco.iarc.fr/today/data/factsheets/populations/900-world-fact-sheets.pdf>
- ^{4,5} Gaya A, Crook T, Plowman N, Ranade A, Limaye S, Bhatt A et al. Evaluation of circulating tumor cell clusters for pan-cancer noninvasive diagnostic triaging [Internet]. 2022 [cited 28 September 2022]. Available from: <https://www.ncbi.nlm.nih.gov/pmc/articles/PMC7984349/>

TrucheckTM
-Research



CANCER PREVENTION RESEARCH | RESEARCH BRIEF

Hallmark Circulating Tumor – Associated Cell Clusters|
Signify 230 Times Higher One-Year Cancer Risk

Cancer Cytopathology

American Cancer Society ACS JOURNALS

Evaluation of Circulating Tumor Cell Clusters for
Pan-Cancer Noninvasive Diagnostic Triaging



Circulating Ensembles of Tumor – Associated Cells: A
Redoubtable New Systemic Hallmark of Cancer

IJC
International Journal of Cancer

DATAR CANCER GENETICS

UNITED KINGDOM | GERMANY | INDIA



Advena Ltd.,
Tower Business Centre, 2nd Flr,
Tower Street, Swatar, BKR 4013, Malta

Contact us:

✉ **UK:** enquiries@datarpgx.com

🌐 datarpgx.com

Proprietary Technology, All Intellectual Property Rights Protected under relevant laws.

v2 08/02/2023